

## RECOMMENDATIONS BEFORE YOU START ASSEMBLY

Plastivan panels are produced with the greatest possible care. Nevertheless, check the panels for size and color deviations or damage. After the panels have been mounted, any complaints will no longer be dealt with. When the panels are placed in a damp room, the room must be sufficiently ventilated. Read the entire installation manual before starting.

## INSTALLATION INSTRUCTIONS

PVC panels are easy to install. Gluing is possible for walls with a completely even surface. For all other applications you can choose from stapling, nailing or screwing on wooden support slats. For damp areas, it is best to choose pre-treated wood and stainless fixings. If you wish, you can add extra insulation between the support slats.

If you decide not to use glue, place the wooden support slats about 30 cm apart against the wall or ceiling. Fix the slats horizontally for a vertical placement of the panels and vice versa.

Measure the number of panels in advance. If you have to place a panel that is too narrow at the end, it is recommended to narrow the first panel, working at least 4 cm.

First fix the start profiles (N ° 96) around the wall or ceiling. The first panel is then placed with the spring side in the starting profile. Before stapling, nailing or screwing in the nail lip (every 30 cm), make sure that the first lane is placed completely straight (using a spirit level or rope). Keep a free movement space of about 5mm all around. Use a fine-toothed saw or jigsaw to cut the panels to size.

Then install a second panel by sliding the tooth into the slot as far as possible before stapling (nailing or screwing). You can also use internal and external corners for the finishing (profile N ° 96).

## MAINTENANCE TIPS

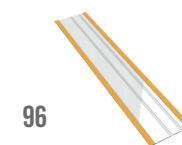
Use regular detergents and a soft cloth or sponge. Solvents are not recommended, as are aggressive cleaning agents.



Art Panel 2020 - Copyright © Plastivan 2020. All rights reserved.

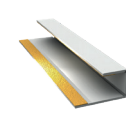
**Art-Panel®**  
FOR TOTAL WALL INSPIRATION  
WE'VE GOT IT COVERED

## FINISHING PROFILES



96

**Fixed inner corner**  
Packing: 10 x 2,7m  
Colour :  
25 High gloss white  
01 Matt white



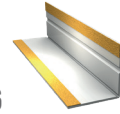
96

**Start and end profile**  
Packing: 10 x 2,7m  
Colour :  
25 High gloss white  
01 Matt white



96

**Internal corner**  
Packing: 10 x 2,7m  
Colour :  
25 High gloss white  
01 Matt white



96

**External corner**  
Packing: 10 x 2,7m  
Colour :  
25 High gloss white  
01 Matt white



9

**Start and end profile**  
Packing: 20 x 2,7m  
Colour :  
11 Grey white  
09F Fondant  
93 Grey (RAL 7035)



10

**Joiner profile**  
Packing: 10 x 2,7m  
Colour :  
11 Grey white  
09F Fondant  
93 Grey (RAL 7035)



4V

**Fixed inner corner**  
Packing: 10 x 2,7m  
Colour :  
11 Grey white  
09F Fondant  
93 Grey (RAL 7035)



17V

**Fixed outer corner**  
Packing: 10 x 2,7m  
Colour :  
11 Grey white  
09F Fondant  
93 Grey (RAL 7035)

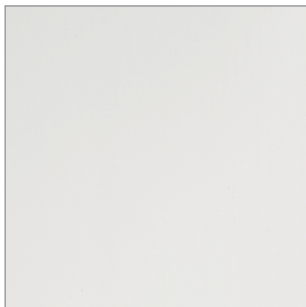
**Art-Panel®**  
produced by PLASTIVAN

— — — — — made in Belgium

Your distributor

Plastivan NV-SA • Wantestraat 3 • B-8780 Oostrozebeke

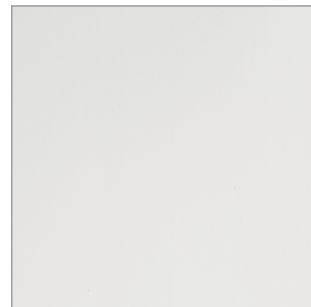




**HIGH GLOSS WHITE**

**6525**

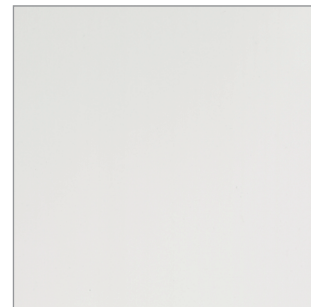
2,7m/4,5m/6m x 250mm x 10mm  
Packing: 4 pieces



**HIGH GLOSS WHITE WITH V-GROOVE**

**6625**

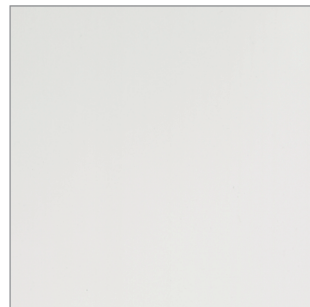
2,7m x 250mm x 10mm  
Packing: 4 pieces



**MATT WHITE WITH V-GROOVE**

**6626**

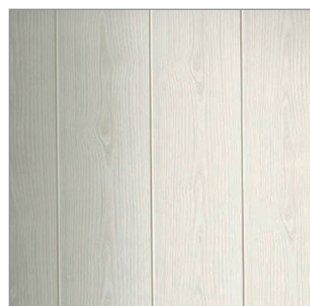
2,7m x 250mm x 10mm  
Packing: 4 pieces



**HIGH GLOSS WHITE PW-1000-HGW**

**2,4m x 1000mm x 10mm**

Packing: 4 pieces



**CREAM WHITE ASH**

**730**

2,7m x 100mm x 10mm  
Packing: 10 pieces



**GRAY WHITE ASH**

**731**

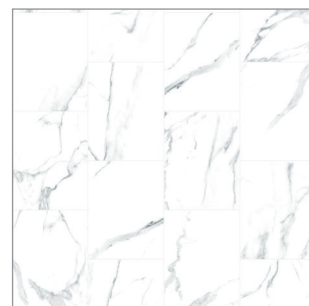
2,7m x 100mm x 10mm  
Packing: 10 pieces



**MINI METRO WHITE**

**87846**

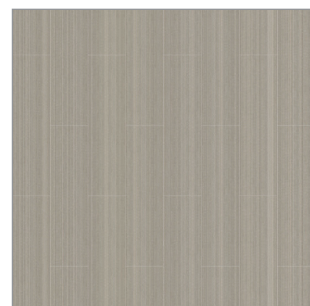
2,6m x 250mm x 7,5mm  
Packing: 4 pieces



**FEVENTA GREY**

**PW-400-FG**

2,6m x 400mm x 7,5mm  
Packing: 4 pieces



**HAVANNA SILVER GREY**

**87841**

2,6m x 250mm x 7,5mm  
Packing: 4 pieces



**HAVANNA DARK BROWN**

**87839**

2,6m x 250mm x 7,5mm  
Packing: 4 pieces

